



SPECIFICATION of POWERSPORT BATTERY

HJTX5L-FP



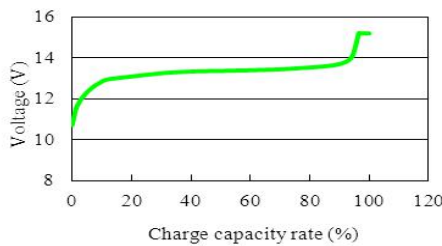
FEATURES:

- **Ultra Light Weight:** 1/3 of normal lead acid battery
- **Excellent Cycle Life:** Over 2000 cycles under JISD standard (lead acid battery only 300 cycles)
- **Premium Charge Acceptance:** Rechargeable with 10C current and 90% recharged within 6 minutes
- **Perfect Shelf Life:** Exceed one year (lead- acid battery 6 months)
- **Highly Safety:** LiFePO4 material and soft pack process ensure the safety performance
- **Multiple Position:** Any direction installation permit since no acid inside-non Spill and non leak
- **Maintenance Free:** 100% maintenance free after EX-WORK date
- **Environment Friendly:** No pollution, no acid, no lead, no heavy metal

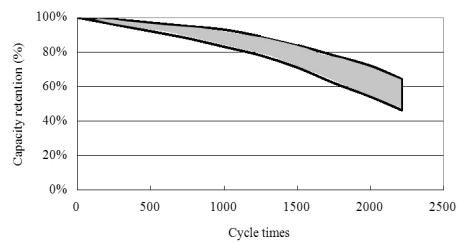
SPECIFICATION

Nominal Voltage: (V)	12.8
Capacity(C10,25°C): (Ah)	≥ 1.6Ah *90%
Weight: (kg)	Approx. 0.4
Charging Current: (A)	STD.: 0.8A; MAX.: 8.0A
Charging Voltage: (V)	14.4±0.5V
High Rate Discharge: (38A, 25°C)	5s Voltage ≥ 10.0V, 90s Voltage ≥ 7.2V
High Rate Discharge: (38A, 0°C)	5s Voltage ≥ 8.5V, 90s Voltage ≥ 7.2V
CCA Tested by Digital Tester: (A)	96
Operating Temperature Range	Charge: 0~45°C
	Discharge: -10~60°C
	Storage: -20~40°C
Cycle Life:	≥ 1000 (100% DOD)
Self Discharge:	Battery can be stored for more than 12 months at 25°C (for higher temperature the self discharge will be faster). Check the battery voltage before using, recharge it if battery voltage less than 12.8V.

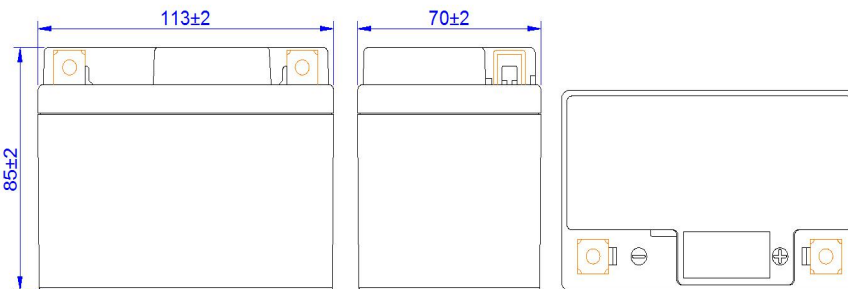
Charge Characteristic



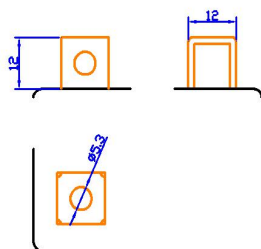
Cycle Life



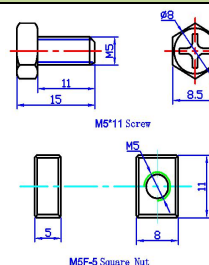
Battery Drawing (±2mm): L113 X W70 X H85



Terminal Drawing:



Screw and Nut Drawing:



Manufacturer Certificate:

TS16949; ISO9001; IS14001; ISO18001

Product Certificate:

UL1642 cell inside; CE; RoHS; UN38.3